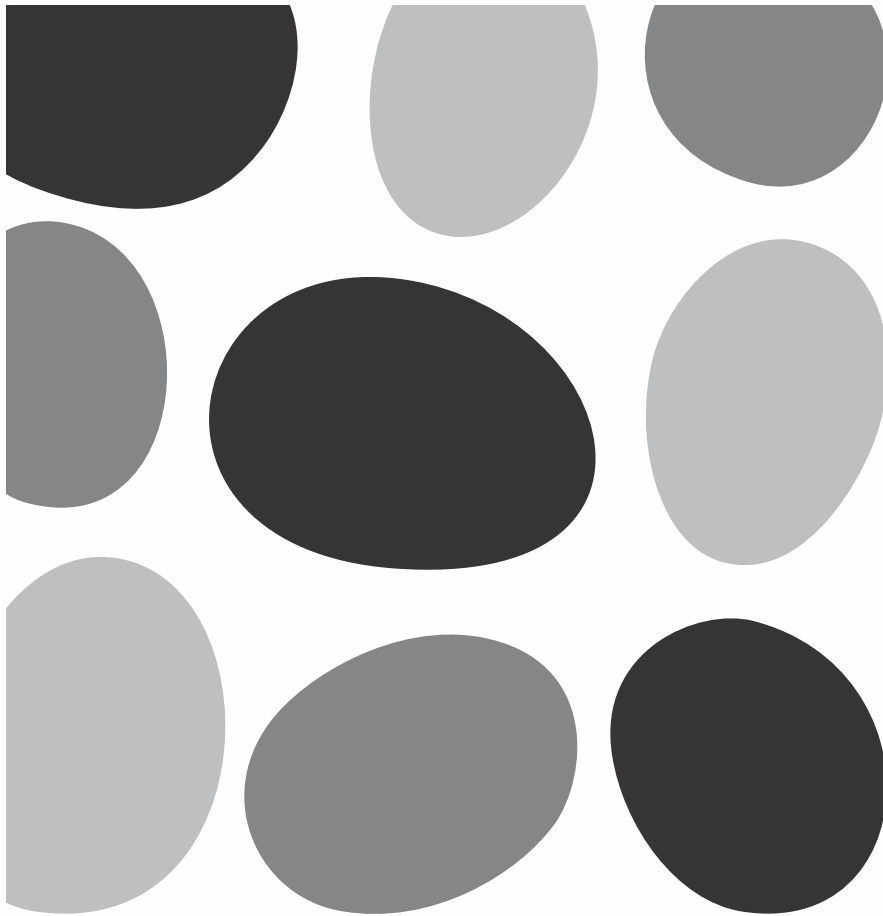


Exclusive

FULL BODY
VITRIFIED TILES

60x60cm

10mm & 16mm
thickness thickness





is now
POWER BRAND



Ceramics today have become an integral part of home development, India being one of the largest domestic market for this segment. Emerged as the 3rd largest consumer for ceramic tiles in the world, India is very well positioned to take the challenges of a global manufacturing base.

At Oasis Tiles India, the country's fastest growing brand, we embrace these challenges and have evolved our offerings that meet and even exceed the expectations of our patrons. Being a leader in the sector, Oasis is a forerunner of technology and quality, creating a better sphere in the Indian tile industry.

Oasis does not believe in selling mere products but instead creating experiences that leave the customers rejuvenated. We thus innovate and implement on every business aspect to continuously improve as a total business entity. One of the core foundations at Oasis is strong Research and Development. Our plants are equipped with the most modern cutting edge technology, mainly adopted from ITALY and SPAIN. Automation and updating is a regular process to keep abreast with competition and the global trends.

Over the past decade, the company has introduced several premium products including High Gloss Glazed vitrified tiles, Sugar finish Glazed vitrified tiles, Glazed vitrified tiles, Glazed Outdoor vitrified tiles, Full body vitrified tiles, Double Charge vitrified tiles, Glazed Ceramic wall tiles and exclusive sanitaryware collection etc.

The aesthetic excellence and the characteristics of Oasis outdoor tile that have always distinguished our collections. Find perfect harmony with the most advanced technological standards of resistance. Oasis outdoor tile is a range that brings together the most diverse products for outdoor application: from the collections inspired by reinterpreting natural stones.

Thanks,

Mr. Sukhdev Patel

Chairman & Managing Director,
Oasis Tiles - India.



FROM THE
CHAIRMAN'S DESK



10mm & 16mm
thickness thickness

60x
60cm

Exclusive
**FULL BODY
VITRIFIED TILES**

BETTER DURABILITY, BETTER COMFORT

Owing to the possibility to install it dry (on grass, sand or gravel and on adjustable or self-levelling supports) Kerrastone 10 mm & 16 mm is the most versatile solution for exterior floors in residential and public areas: paths, terraces, pool sides, parking areas, beach establishments, parks and other urban areas. Perfect coordination between interiors and exteriors.

LAYING INSTRUCTION

DRY - INSTALLATION ONTO STABLE GROUND

Dig the foundations of the patio: go down to a depth of some 15mm. Delimit the area with a concrete curb. Level the surface. Install the slabs onto a dry mixture of mass concrete (with as minimum amount of water possible). Fix the slabs side with a joint of 3-5 mm. Fill in the joints with mortar using a trowel.



DRY - INSTALLATION ONTO SAND SUBSTRATE

Tiles should be placed with a 3-5 mm joint onto a substrate made up of a first layer of gravel and pebbles (15-20 cm) and a second layer of sand (5-10 cm). This allows for the dry-installation with no need for adhesives and grouts. With some simple measures the laying can be performed in complete safety without requiring specific equipment or the intervention of personnel specified.



DRY - INSTALLATION ONTO GRAVEL

If the area to be tiled is reasonably levelled, installation onto gravel is a good option. Start by removing the grass and dig to a depth of around 20cm. Remove the dug ground and pile it along the sides of the area using a rake to create a long and low layer. Edge the dug surface with wood planks of 20 cm width and make them protrude by around 1cm. Fill the recesses with 10 cm of compact pebbles and cover them with a 10 cm layer of gravel. This area can then be used to place garden furniture such as a picnic table, benches, chairs and a barbecue.

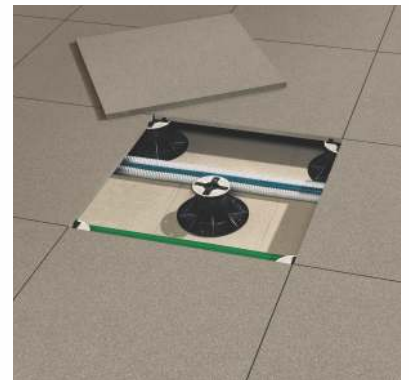


RAISED FLOOR

The installation plane, once considered the right percentage of inclination, necessary for the regular water runoff, it's easy, supporting the pedestals on the waterproofing membrane of the floor area.

After a first pedestals adjustment, the installation is quick and easy thanks to the self-levelling head that automatically compensates inclination up to 5%. The use of an adjustment clef allows you a pinpoint accuracy.

The installation is quick and easy. Firstly, it is necessary to check the planarity of the surface and the substrate in order to proceed with a correct installation of the panels avoiding perimeter cuts smaller than 10cm. After that, it places down a single module, as your guide, followed by other panels around it creating a T-pattern: these panels will build the orthogonal axis from which to start tiling the surface. The perimeter cuts can be trimmed using a diamond-disk blade or a water-cooled tile clipper. No post-installation procedures are required. The panels can be easily removed for inspection using a suction cup or a gripper lifting.



DRY TECH THROUGH-BODY COLOURED FINE



THERMAL SHOCK
RESISTANCE



3/4mm
SPACER



FROST
PROOF



FLAME
RETARDANT



SALT
RESISTANT



ECOFRIENDLY



EASY TO
CLEAN



ACID
RESISTANT



COLOUR
FAST



NON-SLIP
SURFACE



 kerastone

MOSAIC series

FULL BODY VITRIFIED TILES



*Experience the
extravagance of naivety*



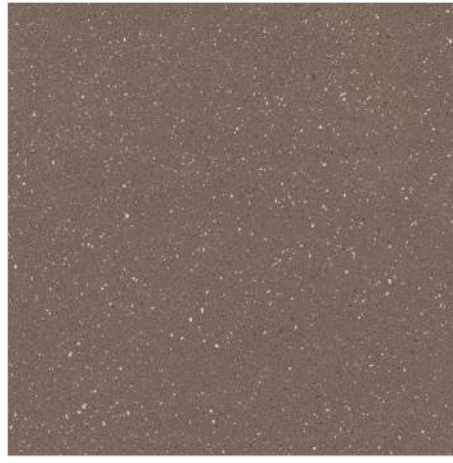
Preview Of Mosaic Grey

MOSAIC AMBER



60x60cm / 600x600mm

MOSAIC COPPER



60x60cm / 600x600mm

 kerastone

FULL BODY
VITRIFIED TILES
60x60cm | MATT FINISH



10mm thickness  3mm SPACER



Preview Of Mosaic Amber + Copper



Preview Of Mosaic Desert

MOSAIC DESERT



60x60cm / 600x600mm

 **kerastone**

FULL BODY

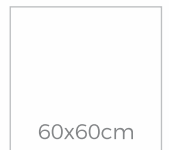
VITRIFIED TILES

60x60cm | MATT FINISH



10mm
thickness

3mm
SPACER



60x60cm



Preview Of Mosaic Black Diamond

kerastone

FULL BODY

VITRIFIED TILES

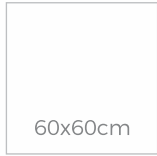
60x60cm | MATT FINISH



10mm thickness



3mm SPACER



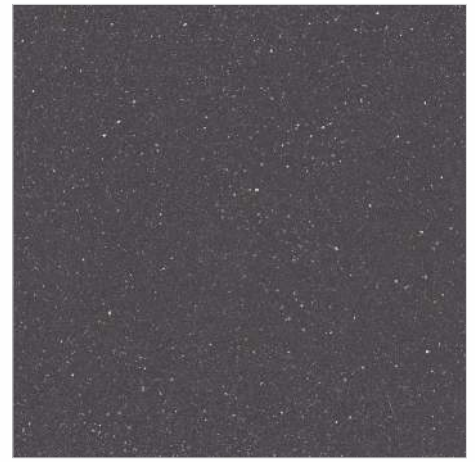
60x60cm

MOSAIC MOUNTAIN



60x60cm / 600x600mm

MOSAIC BLACK DIAMOND



60x60cm / 600x600mm



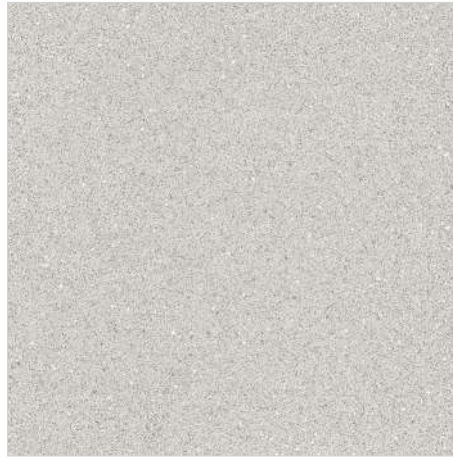
Preview Of Mosaic Mountain

MOSAIC GREY



60x60cm / 600x600mm

MOSAIC BLANCO



60x60cm / 600x600mm

 kerastone

FULL BODY

VITRIFIED TILES

60x60cm | MATT FINISH



10mm
thickness

3mm
SPACER

60x60cm



Preview Of Mosaic Blanco



Preview Of Mosaic Grey




Home House

Preview Of Toro Ash

kerastone

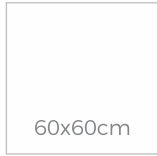
FULL BODY

VITRIFIED TILES

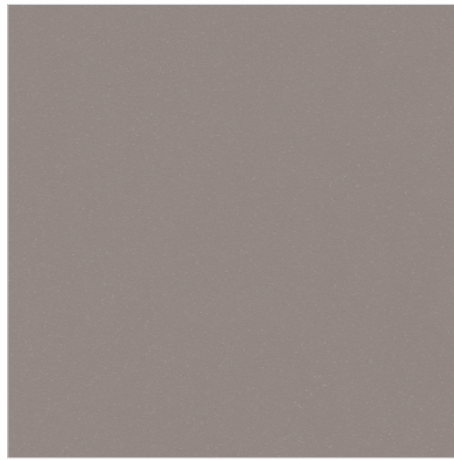
60x60cm | MATT FINISH



10mm thickness  3mm SPACER

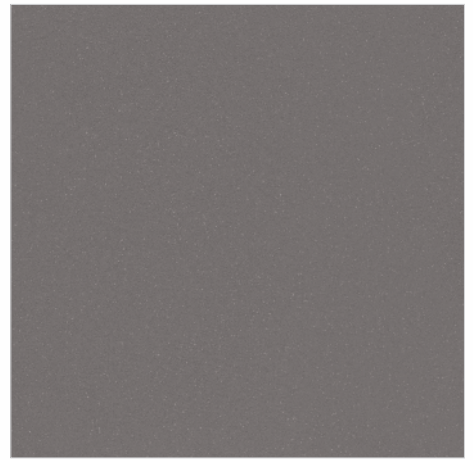


TORO ASH



60x60cm / 600x600mm

TORO GRIS

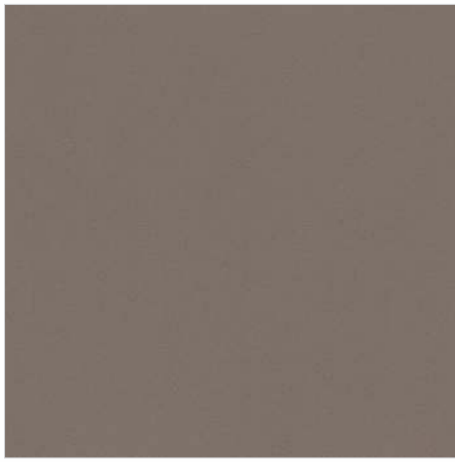


60x60cm / 600x600mm



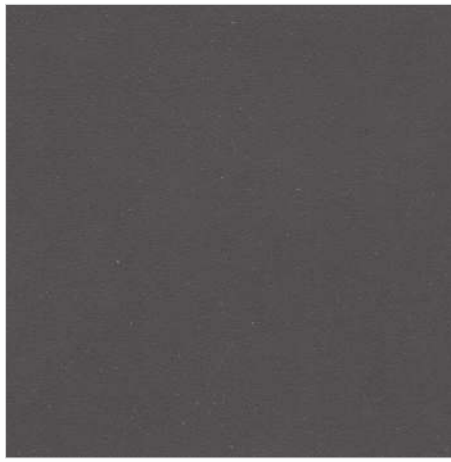
Preview Of Toro Gris

TORO COPPER



60x60cm / 600x600mm

TORO NERO



60x60cm / 600x600mm

 kerastone

FULL BODY
VITRIFIED TILES
60x60cm | MATT FINISH



10mm thickness  3mm SPACER



Preview Of Toro Copper



Preview Of Toro Nero



Chairs



Preview Of Toro Smoke



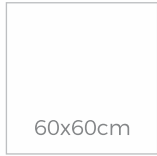
FULL BODY

VITRIFIED TILES

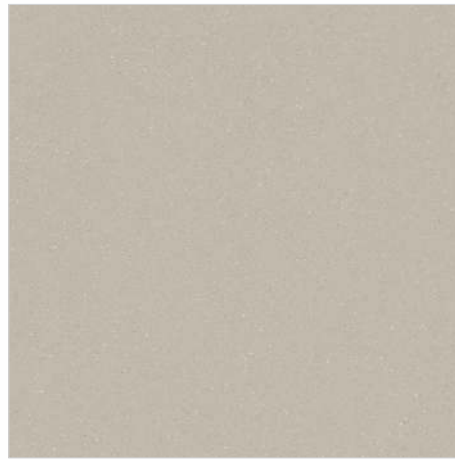
60x60cm | MATT FINISH



10mm thickness 3mm SPACER

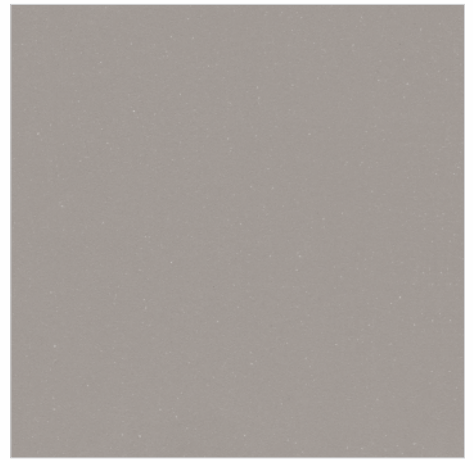


TORO SMOKE



60x60cm / 600x600mm

TORO SILVER

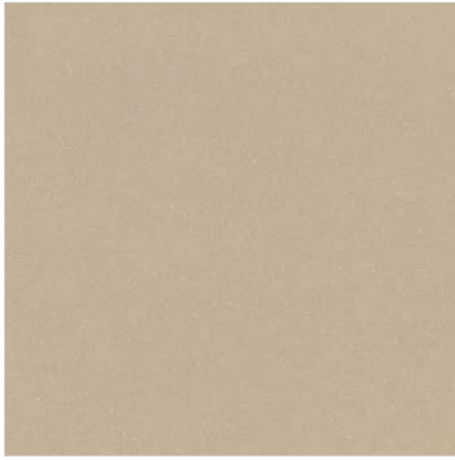


60x60cm / 600x600mm



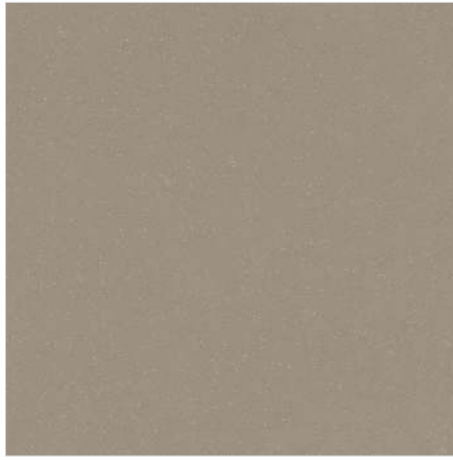
Preview Of Toro Silver

TORO STORM



60x60cm / 600x600mm

TORO VERDE



60x60cm / 600x600mm

 kerastone

FULL BODY

VITRIFIED TILES

60x60cm | MATT FINISH



10mm
thickness



60x60cm



Preview Of Toro Verde



Preview Of Toro Strom



Preview Of Toro Thunder + Copper

kerastone

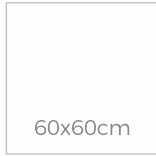
FULL BODY

VITRIFIED TILES

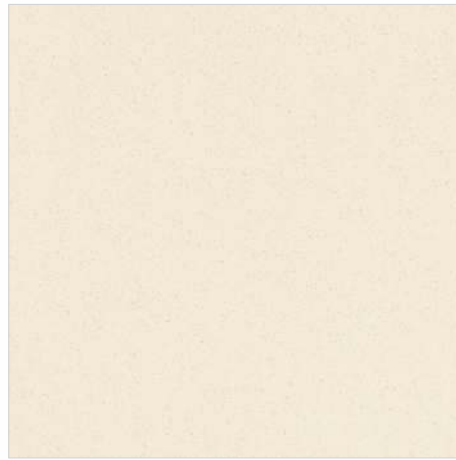
60x60cm | MATT FINISH



10mm thickness  3mm SPACER

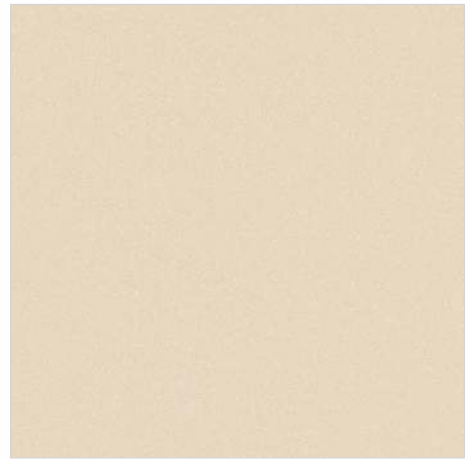


TORO THUNDER



60x60cm / 600x600mm

TORO SAND

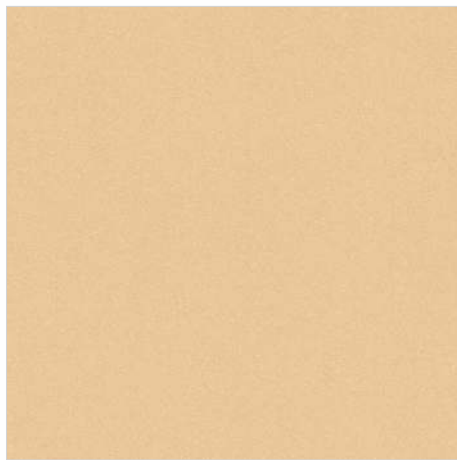


60x60cm / 600x600mm



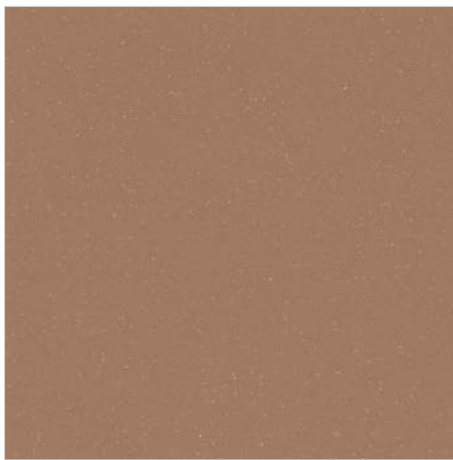
Preview Of Toro Sand

TORO SILK



60x60cm / 600x600mm

TORO COTTO



60x60cm / 600x600mm

 **kerastone**

FULL BODY
VITRIFIED TILES
60x60cm | MATT FINISH



10mm
thickness

3mm
SPACER

60x60cm



Preview Of Toro Silk



Preview Of Toro Cotto



Preview Of Granite Blanco

kerastone

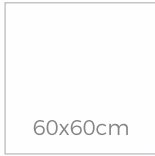
FULL BODY

VITRIFIED TILES

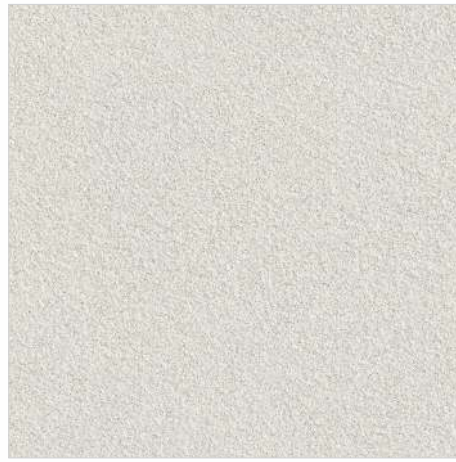
60x60cm | RUSTIC FINISH



16mm thickness 4mm SPACER

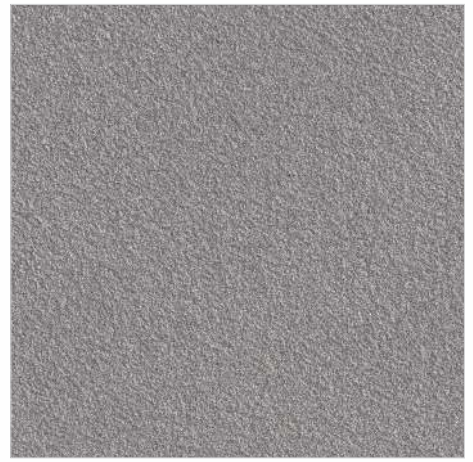


GRANITE BLANCO



60x60cm / 600x600mm

GRANITE GRIS

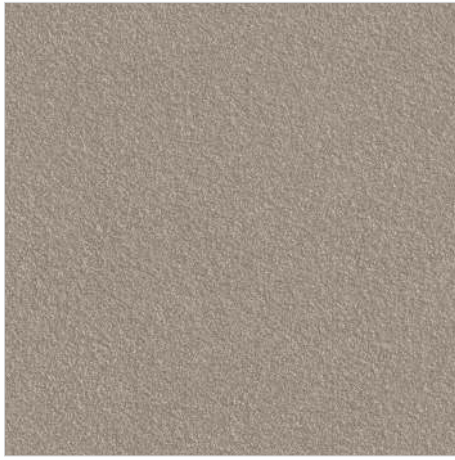


60x60cm / 600x600mm



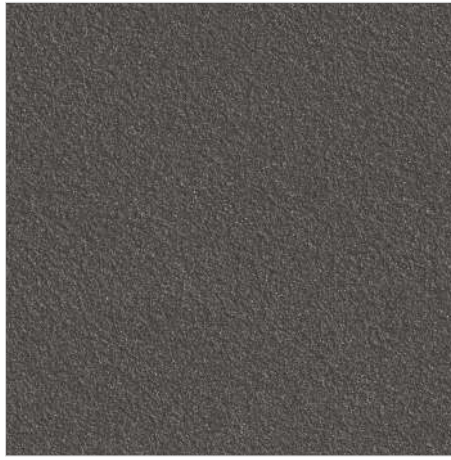
Preview Of Granite Gris

GRANITE VERDE



60x60cm / 600x600mm

GRANITE NERO



60x60cm / 600x600mm

 kerastone

FULL BODY

VITRIFIED TILES

60x60cm | RUSTIC FINISH



16mm
thickness

4mm
SPACER

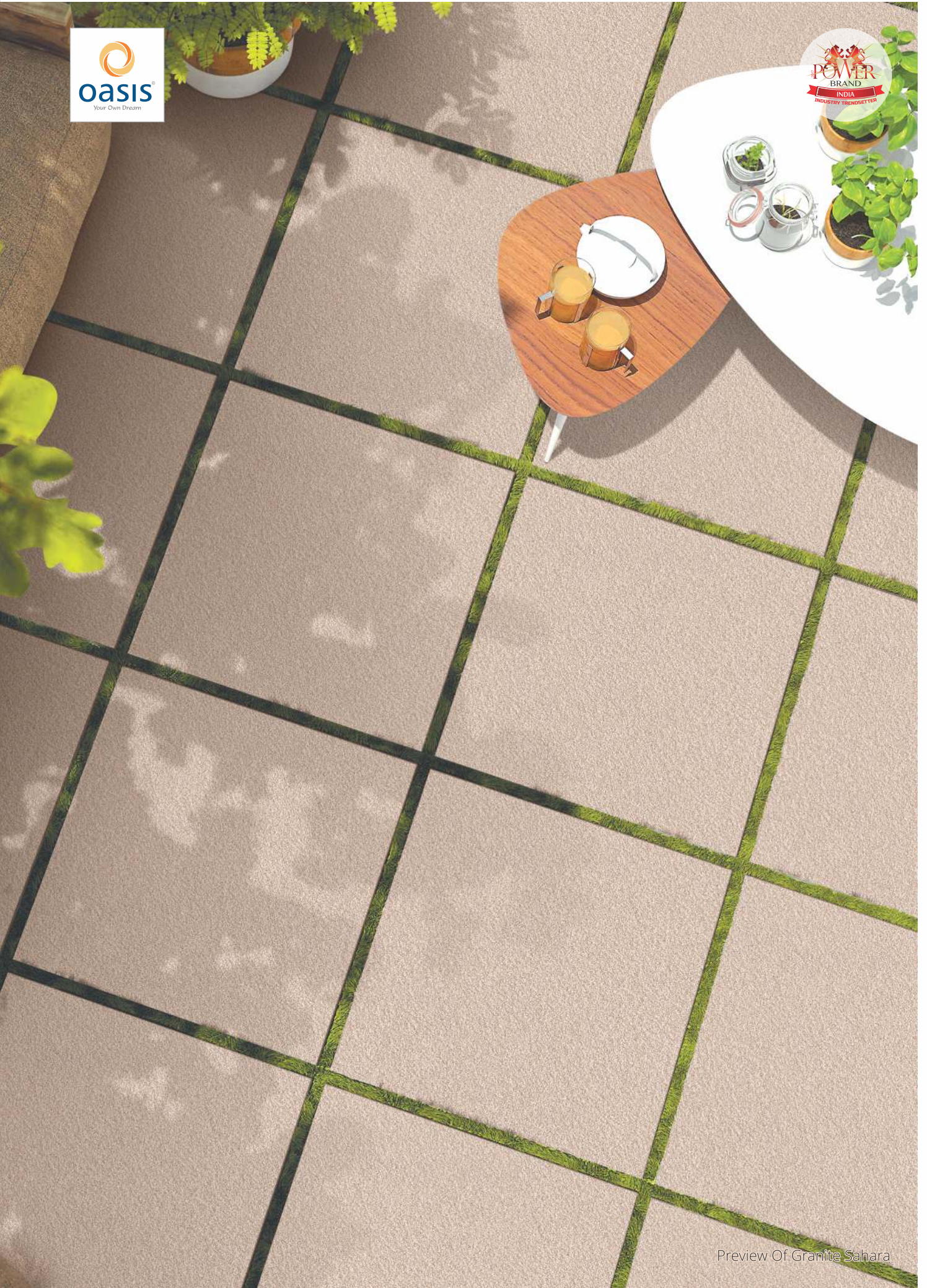
60x60cm



Preview Of Granite Verde



Preview Of Granite Nero



Preview Of Granite Sahara

kerastone

FULL BODY

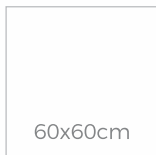
VITRIFIED TILES

60x60cm | RUSTIC FINISH



16mm
thickness

4mm
SPACER

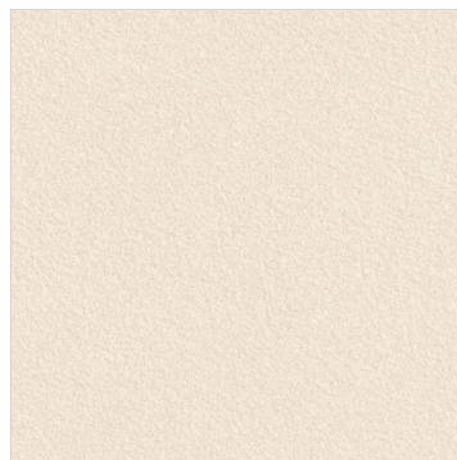


GRANITE SAHARA



60x60cm / 600x600mm

GRANITE CREMA

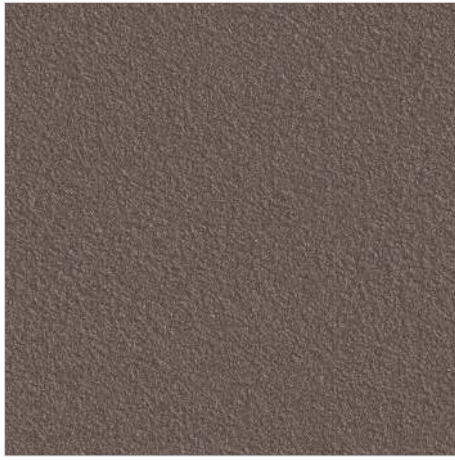


60x60cm / 600x600mm



Preview Of Granite Crema

GRANITE CHOCO



60x60cm / 600x600mm

GRANITE TERRA



60x60cm / 600x600mm

 kerastone

FULL BODY
VITRIFIED TILES
60x60cm | RUSTIC FINISH



16mm thickness  4mm SPACER



Preview Of Granite Choco



Preview Of Granite Terra



Preview Of Granite Blanco

kerastone

FULL BODY

VITRIFIED TILES

60x60cm |

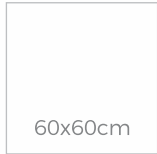
GLOSSY/MATT FINISH



10mm thickness

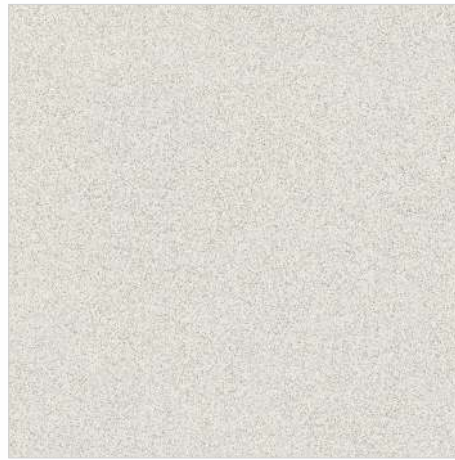


3mm SPACER



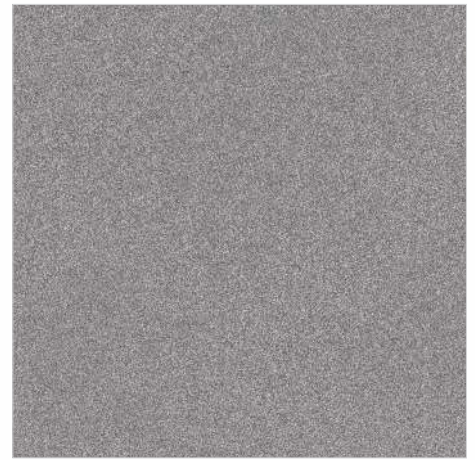
60x60cm

GRANITE BLANCO



60x60cm / 600x600mm

GRANITE GRIS

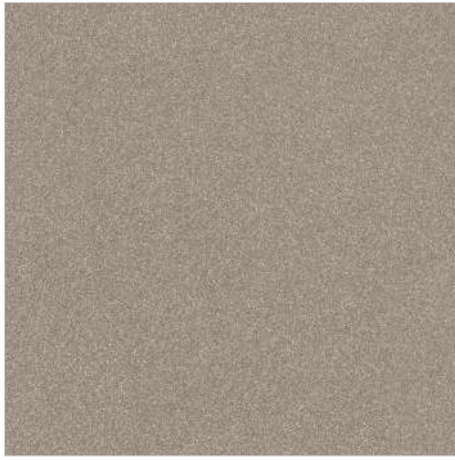


60x60cm / 600x600mm



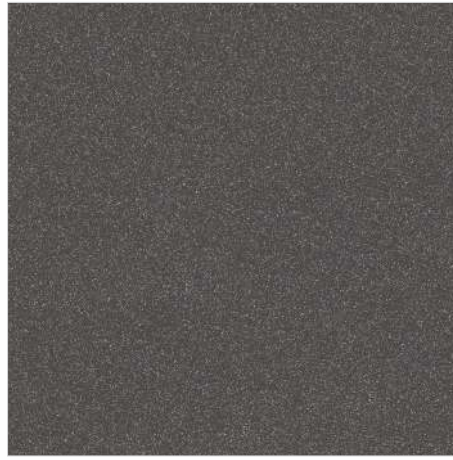
Preview Of Granite Gris

GRANITE VERDE



60x60cm / 600x600mm

GRANITE NERO



60x60cm / 600x600mm

 kerastone

FULL BODY

VITRIFIED TILES

60x60cm

GLOSSY/MATT FINISH



10mm
thickness

3mm
SPACER



60x60cm



Preview Of Granite Nero



Preview Of Granite Verde



Preview Of Granite Crema

kerastone

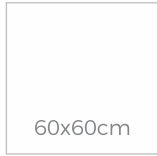
FULL BODY

VITRIFIED TILES

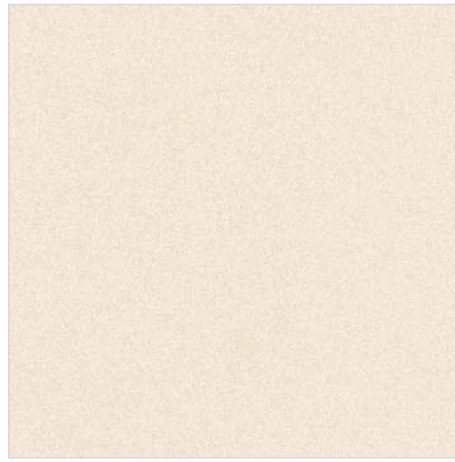
60x60cm | MATT FINISH



10mm thickness  3mm SPACER



GRANITE CREMA



60x60cm / 600x600mm

GRANITE SAHARA



60x60cm / 600x600mm



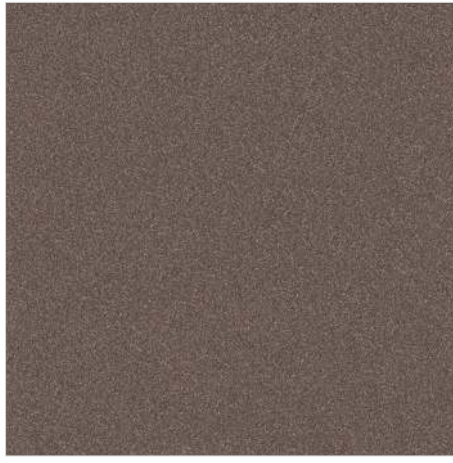
Preview Of Granite Sahara

GRANITE TERRA



60x60cm / 600x600mm

GRANITE CHOCO



60x60cm / 600x600mm

kerastone

FULL BODY
VITRIFIED TILES
60x60cm
GLOSSY/MATT FINISH

10mm thickness 3mm SPACER



Preview Of Granite Choco



Preview Of Granite Terra

TECHNICAL SPECIFICATION OF FULLBODY VITRIFIED TILES

| | CHARACTERISTIC | STANDARD AS PER ISO-13006/ EN14411 GROUP Bla | MEAN VALUE OF OASIS FULLBODY VITRIFIED TILES | | TEST METHOD |
|-------------------------------------|-----------------------------|--|---|-----------------------------|----------------|
| | | | FULLBODY 16 mm | FULLBODY 10 mm | |
| Regulatory Properties | Deviation In Length & Width | ± 0.50% | ± 0.20% | ± 0.20% | ISO-10545-2 |
| | Deviation In Thickness | ± 5.00% | ± 4.00% | ± 4.00% | ISO-10545-2 |
| | Straightness Of Sides | ± 0.50% | ± 0.10% | ± 0.10% | ISO-10545-2 |
| | Rectangularity | ± 0.50% | ± 0.20% | ± 0.20% | ISO-10545-2 |
| | Surface Flatness | ± 0.50% | ± 0.20% | ± 0.20% | ISO-10545-2 |
| | Color Differences | Unaltered | No Change | No Change | ISO-10545-16 |
| Structural Properties | Water Absorption | < 0.50% | < 0.50% | < 0.05% | ISO-10545-3 |
| | Apparent Density | > 2.00 g/cc | > 2.28 g/cc | > 2.28 g/cc | DIN 51082 |
| Massive Mechanical Properties | Modulus of Rupture | Min. 35N/mm ² | Min. 45N/mm ² | Min. 45N/mm ² | ISO-10545-4 |
| | Breaking Strength | Min 1300 N | Min. 7500 N | Min. 2000 N | ISO-10545-4 |
| | Impact Resistance | As Per Mfg. | Min. 0.55 | Min. 0.55 | ISO-10545-5 |
| Surface Mechanical Properties | Deep Abrasion Resistance | Max. 175mm ³ | Max. 132mm ³ | Max. 132mm ³ | ISO-10545-6 |
| | Moh's Hardness | Min. 6 | 7 | 7 | EN 101 |
| | Surface Abrasion Resistance | As Per Mfg. | N. A. | N. A. | ISO-10545-7 |
| Thermo Hygrometric Properties | Frost Resistance | No Damage | Frost Proof | Frost Proof | ISO-10545-12 |
| | Thermal Shock Resistance | No Damage | No Damage | No Damage | ISO-10545-9 |
| | Moisture Expansion | Nil | Nil | Nil | ISO-10545-10 |
| | Thermal Expansion(COE) | Max. 9.0 X 10 ⁻⁶ | Max. 6.5 X 10 ⁻⁶ | Max. 6.5 X 10 ⁻⁶ | ISO-10545-8 |
| | Crazing Resistance | As Per Mfg. | N. A. | N. A. | ISO-10545-11 |
| Chemical Properties | Chemical Resistance | No Damage | No Damage | No Damage | ISO-10545-13 |
| | Stain Resistance | Resistant | Resistant | Resistant | ISO-10545-14 |
| Safety Properties | Slip Resistance | > 0.40 | > 0.40 | > 0.40 | ISO-10545-17 |

PACKING DEATIL

| Products | Size in cm | Thikness | Pcs. / Box | Weight / Box | Sq. Mtr. / Box |
|---|------------|----------|------------|--------------|----------------|
| FULL BODY VITRIFIED TILES (KERASTONE) | 60x60cm | 10mm | 4 | 32.00 kg. | 1.44 sq. mtr. |
| | | 16mm | 2 | 28.00 kg. | 0.72 sq. mtr. |

Note: Colour Shown are as accurate as the limitations of the printing process will allow. Prospective customers are advised to inspect a sample of the tile before ordering. Every effort has been made to ensure the accuracy of the information given. However, the company reserve the right to change the specifications without prior notice. Sometime variations in shade or size being inherent to ceramic industry may occur. Before fixing, we advise you to follow the fixing instructions on the cartons of the tiles as no responsibility can be accepted by the company once the tiles have been fixed.



is now
POWER BRAND





CORPORATE OFFICE:
OASIS VITRIFIED PVT. LTD.
8-A, N.H., Kandla Road,
MORBI - 363 642, (Guj.) INDIA.

☎ +91 70462 88888

@ info@oasistiles.in

🌐 www.oasistiles.in

OVERSEAS INQUIRIES:
OASIS TILES INDIA.

☎ +91 99099 88668

@ export@oasistiles.in

